



EUROPEAN YACHTING NETWORK

Chris Craft RMB 57 (1966)

Property: 16.301.1416



EYN Price: **€ 135.000**

Length: 17,42 m; Width: 4,54 m; Draft: 1,38 m; Headroom: 1,95 m; Engine brand: GM 8V71; Total engine power: 640 hp; Engine hours: Unknown; Number of engines: 2 ; -: Ship carpenter ;

New paint. The Ia Ora Na is a great American classic. The yacht was built in 1966 at the Roamer Yachts Division, of Chris Craft. Here she got the serialnumber RMB 57. The combination of a steel hull with a wooden (teak) superstructure gives her a chic look. New Teakdeck. With her length and width, she is very suitable for habitation. And because of her powerful engines she will be borrowed for offshore sailing but also the inland waters are perfect as sailing areas. There are 10 berths on board (2x owner's cabin, crew cabin 4x, 2x and 2x guest cabin dinette), so she can be enjoyed by a large group.



EUROPEAN YACHTING NETWORK

The yacht

Brand	Chris Craft
Type	RMB 57
Boat type	Classic motor boat
Name of the boat	Ia Ora Na
BTW/VAT	Paid
Year of construction	1966
Berth	Noord-Brabant - Nederland
Shipyard	Chris Craft

Sizes & Weights

Length	17,42 m
Width	4,54 m
Draft	1,38 m
Clearance	3,60 m
Headroom	1,95 m
Drinking water	1.000 l
Black water	1.000 l
Maximum speed	14 kn

The engine

Engine brand	GM 8V71
Total engine power	640 hp
Last service	01-05-2018
Fueltank capacity	3.000 l



EUROPEAN YACHTING NETWORK

* POSSIBILITIES

Suitable for habitation	Yes
Options present	Hull measurements available

DECK EQUIPMENT

Material deck	Teak
Anchor	Electrical
Options present	Swimming platform Rail Deck washing system Anchor winch Winch Sailing lights Davits

ELECTRONICS

Voltage circuit	12V + 24V + 220V
Heating	Central heating
Options present	Washing machine Battery charger Shore power

ENGINE ROOM

Starting batteries	2 150amp
Exhaust	Water Cooled
Number of engines	2
Fuel	Diesel
Generator	Diesel generator 15kvA
Type of starting batteries	maintenance free

GALLEY

Cooking ring	Electrical
Options present	Oven Microwave Dishwasher



EUROPEAN YACHTING NETWORK

Geyser
Sink
Freezer
Air evacuation system
Fridge
Coffee machine

INTERIOR LAYOUT

Berths	10
Bedrooms	3
Crew cabin	2
Window frames	Framed in teak superstructure
Bathroom	2
Options present	Aft cabin Front cabin Dinette Minibar

MATERIALS INTERIOR

-	Ship carpenter
Floor covering	Vloerbedekking stof
Woodwork	Mahogany
Seats	Fabric

NAVIGATION

Bow thruster	Electric
Heck thruster	Electric
Rudder Indicator	yes
Options present	Log Compass Depth gauge Claxon

SAFETY

Options present	Rescue buoy
------------------------	-------------



EUROPEAN YACHTING NETWORK

TECHNICAL DETAILS

Type of engine	Inboard
Technical condition below the waterline	Good condition
Propulsion	Fixed propeller shaft
Propeller(s)	3 Blades
Material (hull)	Steel
Throttles	Cabling
Type of boat	Yacht
Type of hull	Chine
Sailing properties	Half glider
Steering equipment	Steeringweel
Material structure	Teak
Technical condition hull	Good condition
Technical condition deck	Good condition
Condition structure	Good condition
Options present	Bow planes

WET ROOM

Toilet	2
Shower	1
Bathrooms	2

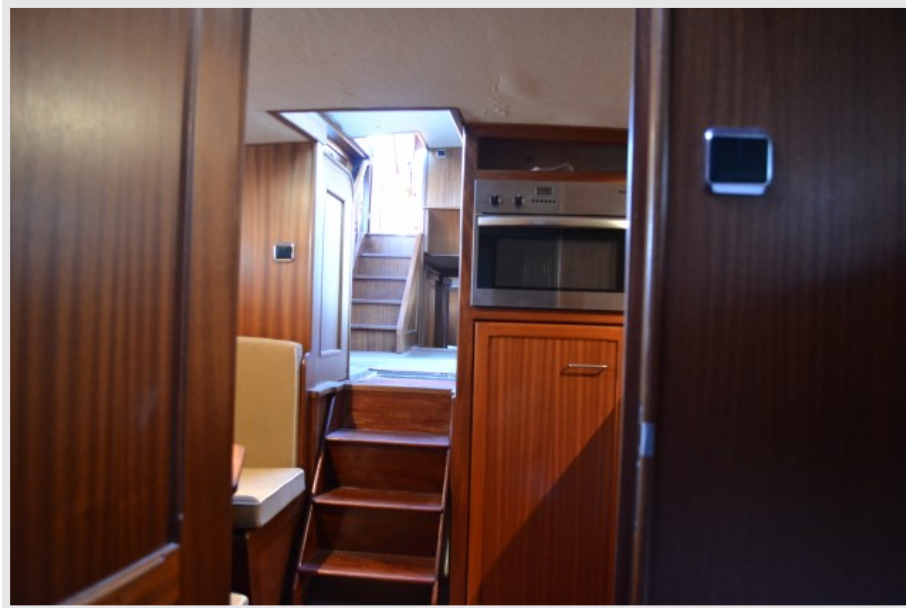


EUROPEAN YACHTING NETWORK





EUROPEAN YACHTING NETWORK





EUROPEAN YACHTING NETWORK

