



EUROPEAN YACHTING NETWORK

## Freighter 53meter (1955)

Property: 43.710.2507



EYN Price: **€ 125.000**

Length: 52,95 m; Width: 6,60 m; Draft: 1,20 m; Headroom: 0,00 m; Engine brand: Caterpillar 340STA; Total engine power: 366 hp; Engine hours: Unknown; Number of engines: 1 ; - : Shipyard ; Trade: Negotiable ; Private Financing: Possible ;



EUROPEAN YACHTING NETWORK

### The yacht

<b>Brand</b>	Freighter
<b>Type</b>	53meter
<b>Boat type</b>	Ex-Professional
<b>Name of the boat</b>	SCORPIO
<b>BTW/VAT</b>	Paid
<b>Year of construction</b>	1955
<b>Berth</b>	Oost-Vlaanderen - België
<b>Shipyard</b>	Sint Pieter Hemiksem (BE)

### Sizes & Weights

<b>Length</b>	52,95 m
<b>Width</b>	6,60 m
<b>Draft</b>	1,20 m
<b>Clearance</b>	4,86 m
<b>Displacement</b>	551.000 kg
<b>Drinking water</b>	2.000 l

### The engine

<b>Engine brand</b>	Caterpillar 340STA
<b>Total engine power</b>	366 hp
<b>Last service</b>	-
<b>Fueltank capacity</b>	16.000 l



EUROPEAN YACHTING NETWORK

#### \* POSSIBILITIES

<b>Status</b>	PLEASE MAKE AN OFFER
<b>Private Financing</b>	Possible
<b>Berth</b>	Transmissible
<b>Trade</b>	Negotiable
<b>Suitable for habitation</b>	Yes
<b>Options present</b>	Hull measurements available

#### DECK EQUIPMENT

<b>Material deck</b>	Steel
<b>Anchor</b>	Electrical

#### ELECTRONICS

<b>Voltage circuit</b>	220v
<b>Heating</b>	diesel
<b>Options present</b>	Shore power

#### ENGINE ROOM

<b>Starting batteries</b>	2
<b>Number of engines</b>	1
<b>Fuel</b>	Diesel
<b>Generator</b>	yess
<b>Options present</b>	220V socket

#### GALLEY

<b>Cooking ring</b>	Electrical
<b>Options present</b>	Oven
	Microwave
	Dishwasher
	Sink
	Freezer
	Fridge

#### INTERIOR LAYOUT

<b>Berths</b>	2
---------------	---



## EUROPEAN YACHTING NETWORK

<b>Bedrooms</b>	1
<b>Window frames</b>	Aluminium
<b>Bathroom</b>	1
<b>Options present</b>	Aft cabin Front cabin Dinette

### MATERIALS INTERIOR

<b>Ceiling</b>	Wood
-	Shipyards
<b>Floor covering</b>	Hout
<b>Options present</b>	Curtains

### NAVIGATION

<b>Bow thruster</b>	ja Diesel
<b>Rudder Indicator</b>	yes
<b>Options present</b>	Radar Mariphone Automatic pilot AIS

### OTHER

<b>Dinghy</b>	ja
---------------	----

### TECHNICAL DETAILS

<b>Type of engine</b>	Inboard
<b>Technical condition below the waterline</b>	Good condition
<b>Material (hull)</b>	Steel
<b>Anti fouling</b>	Done EPOXY COATING
<b>Throttles</b>	Morse
<b>Material structure</b>	Steel
<b>Technical condition hull</b>	Good condition
<b>Technical condition deck</b>	Good condition
<b>Condition structure</b>	Good condition



EUROPEAN YACHTING NETWORK

**WET ROOM**

<b>Toilet</b>	1
<b>Shower</b>	1
<b>Bathrooms</b>	1

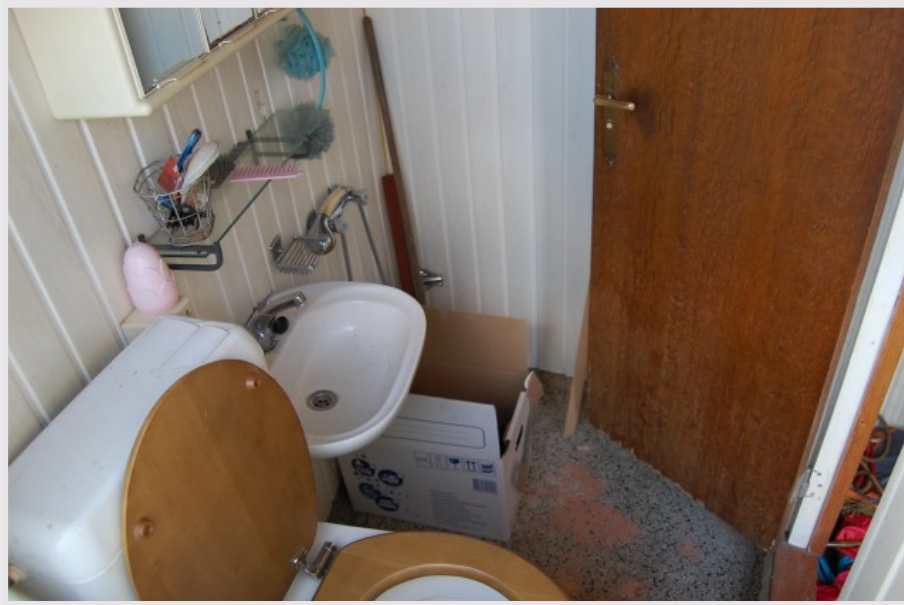


EUROPEAN YACHTING NETWORK





EUROPEAN YACHTING NETWORK





EUROPEAN YACHTING NETWORK

