



EUROPEAN YACHTING NETWORK

## Houseboat / Woonboot Klipperak (1913)

Property: 66.803.2556



EYN Price: **€ 165.000**

Length: 30,05 m; Width: 5,00 m; Draft: 0,47 m; Headroom: 0,00 m; Engine brand: DAF 575; Total engine power: 120 hp; Engine hours: Unknown; Number of engines: 1 ; -: Owner ; Trade: Negotiable ; Rent (to buy): Not possible ; Inspection report is available: ; Private Financing: Possible ;

Very spacious and beautiful furnished 30 meter Klipperak for sale. This houseboat has a very spacious living room and modern kitchen. The boat is in sailing condition, with a DAF engine. Berth transferable.



EUROPEAN YACHTING NETWORK

### The yacht

<b>Brand</b>	Houseboat / Woonboot
<b>Type</b>	Klipperaak
<b>Boat type</b>	Ex-Professional
<b>Name of the boat</b>	L.V. Beethoven
<b>BTW/VAT</b>	Not paid
<b>Year of construction</b>	1913
<b>Berth</b>	LUIK - België

### Sizes & Weights

<b>Length</b>	30,05 m
<b>Width</b>	5,00 m
<b>Draft</b>	0,47 m
<b>Clearance</b>	4,00 m
<b>Displacement</b>	30.000 kg

### The engine

<b>Engine brand</b>	DAF 575
<b>Total engine power</b>	120 hp
<b>Last service</b>	-
<b>Fuel tank capacity</b>	2.000 l



EUROPEAN YACHTING NETWORK

#### \* POSSIBILITIES

<b>Status</b>	PLEASE MAKE AN OFFER
<b>Private Financing</b>	Possible
<b>Berth</b>	Transmissible
<b>Trade</b>	Negotiable
<b>Suitable for habitation</b>	Yes
<b>Rent (to buy)</b>	Not possible
<b>Options present</b>	Inspection report is available Hull measurements available

#### DECK EQUIPMENT

<b>Material deck</b>	Steel
<b>Anchor</b>	ja
<b>Options present</b>	Rail

#### ELECTRONICS

<b>Voltage circuit</b>	24V + 220V + 380V
<b>Heating</b>	Central heating
<b>Options present</b>	Shore power

#### ENGINE ROOM

<b>Starting batteries</b>	2
<b>Exhaust</b>	Water Cooled
<b>Number of engines</b>	1
<b>Fuel</b>	Diesel
<b>Options present</b>	220V socket

#### ENTERTAINMENT

<b>Options present</b>	Sound system TV aerial
------------------------	---------------------------

#### GALLEY

<b>Cooking ring</b>	Induction
<b>Options present</b>	Microwave Dishwasher



**EUROPEAN YACHTING NETWORK**

Geyser  
Sink  
Freezer  
Fridge

**INTERIOR LAYOUT**

<b>Berths</b>	9
<b>Bedrooms</b>	4
<b>Window frames</b>	Aluminium - Single glass
<b>Bathroom</b>	1

**MATERIALS INTERIOR**

<b>Ceiling</b>	Wood
-	Owner
<b>Floor covering</b>	Hout

**TECHNICAL DETAILS**

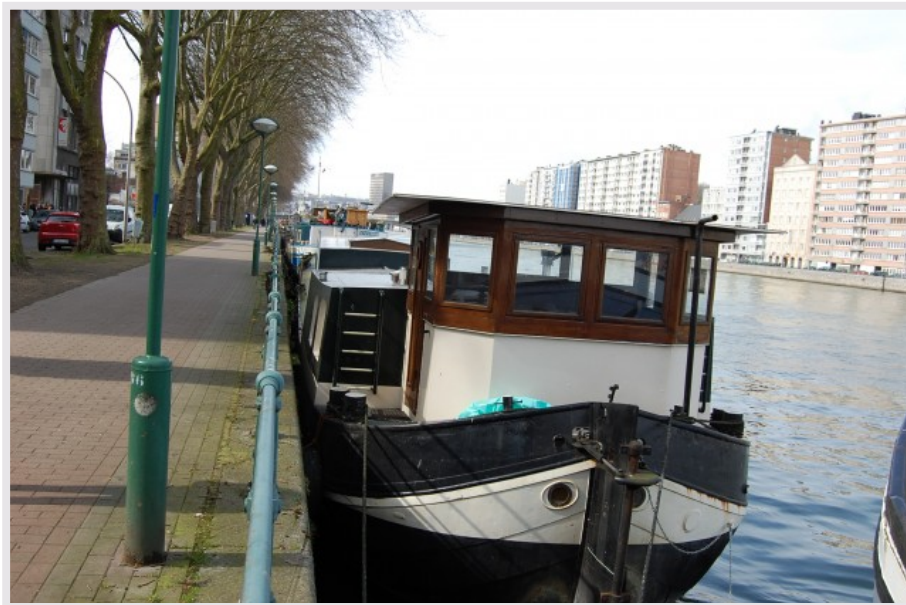
<b>Type of engine</b>	Inboard
<b>Technical condition below the waterline</b>	Good condition
<b>Material (hull)</b>	Steel
<b>Anti fouling</b>	Done 2011
<b>Throttles</b>	Cabling

**WET ROOM**

<b>Toilet</b>	1
<b>Shower</b>	1
<b>Bathrooms</b>	1
<b>Options present</b>	Bath



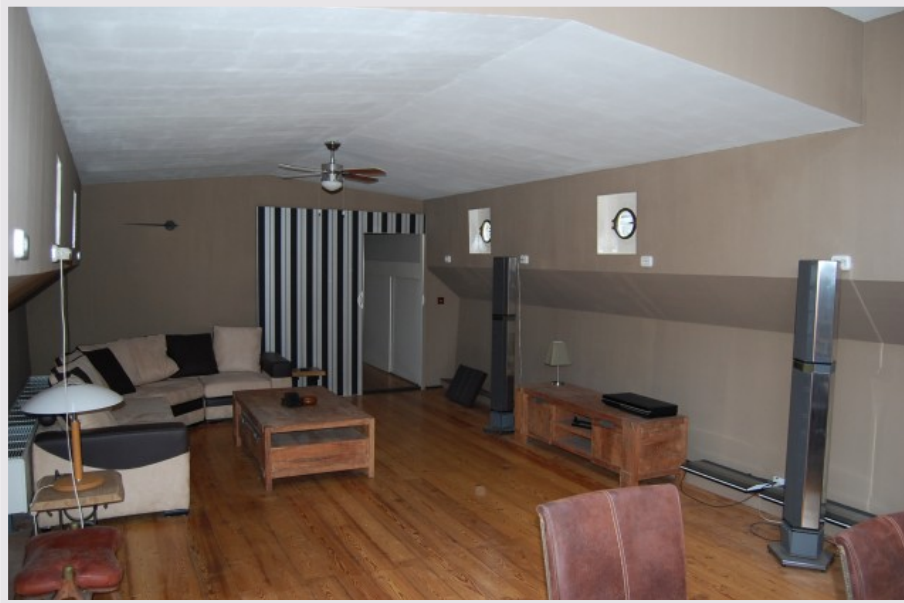
EUROPEAN YACHTING NETWORK







EUROPEAN YACHTING NETWORK





EUROPEAN YACHTING NETWORK

