



EUROPEAN YACHTING NETWORK

J/Boats J/109 (2005)

Property: 44.008.2795



EYN Price: **€ 89.750**

Length: 10,75 m; Width: 3,50 m; Draft: 2,10 m; Headroom: 1,90 m; Engine brand: Volvo Penta md 2020; Total engine power: Unknown; Engine hours: Unknown; -: Shipyard ;

This J/109 is an excellent sailing boat. Fast, sporty and easy to sail with a spacious cockpit and a full interior. With this ship you can sail both competitions and holidays with the whole family. This J/109 is from the first owner and is equipped with a racing package with HyTech steering wheel with deck cutout and racing folding propeller. The ship is used commercially for day events with other J/109s. This was a limited number of days per year, never with nights. The ship has therefore hardly been used and looks beautiful. The price includes VAT, but can be deducted (business). For more information or to make an appointment for a viewing, please contact: Jacques van Seventer j.vanseventer@e-y-n.com +31 6-40948411



EUROPEAN YACHTING NETWORK

The yacht

Brand	J/Boats
Type	J/109
Boat type	Sail boat
BTW/VAT	Paid
Year of construction	2005
Berth	Lelystad - Nederland
Shipyard	J/Boats

Sizes & Weights

Length	10,75 m
Width	3,50 m
Draft	2,10 m
Clearance	16,50 m
Displacement	4.944 kg
Ballast	1.770 kg
Headroom	1,90 m
Maximum speed	15 kn
Cruising speed	7 kn

The engine

Engine brand	Volvo Penta md 2020
Last service	01-04-2019
Fueltank capacity	0 l



EUROPEAN YACHTING NETWORK

* POSSIBILITIES

Status In sales marina

DECK EQUIPMENT

Material deck Polyester
Anchor Manual
Options present Swimming ladder
Swimming platform
Rail
Winch 4ST 2SP
Sailing lights
Self-draining cockpit

ELECTRONICS

Voltage circuit 12V + 220V
Options present Battery charger
Shore power

ENGINE ROOM

Starting batteries 1
Exhaust Water Cooled
Fuel Diesel
Light batteries 2
Options present Washbasin
220V socket
Bilge-pump
Water pressure system

GALLEY

Cooking ring 2 Burners gas
Options present Oven
Sink
Fridge

INTERIOR LAYOUT



EUROPEAN YACHTING NETWORK

Berths	6 4 + 2
Bedrooms	2

MATERIALS INTERIOR

Ceiling	Skai
-	Shipyard
Floor covering	Houten vloerdelen
Woodwork	Teak
Seats	Fabric

NAVIGATION

Communication	VHF/UKW
Options present	Wind meter
	Mariphone
	Log
	Compass
	Depth gauge
	GPS

OTHER

Options present	Fenders
	Covers, summer

RIGGING

Type of rigging	fractional
Mast	Aluminium
Winches	Manual
Options present	Jib
	Mainsail en gennaker

SAFETY

CE-mark	A
Options present	Life jackets
	Rescue buoy
	Fire extinguisher(s)



EUROPEAN YACHTING NETWORK

TECHNICAL DETAILS

Type of engine	Inboard
Technical condition below the waterline	Good condition
Keel	Bulbkiel
Propulsion	Saildrive
Propeller(s)	2 blads klapschroef
Material (hull)	Polyester
Anti fouling	Done
Throttles	Morse
Type of hull	Soft chine
Steering equipment	Steeringweel
Technical condition hull	Good condition
Technical condition deck	Good condition
Condition structure	Good condition

WET ROOM

Toilet	Manual
Shower	1



EUROPEAN YACHTING NETWORK



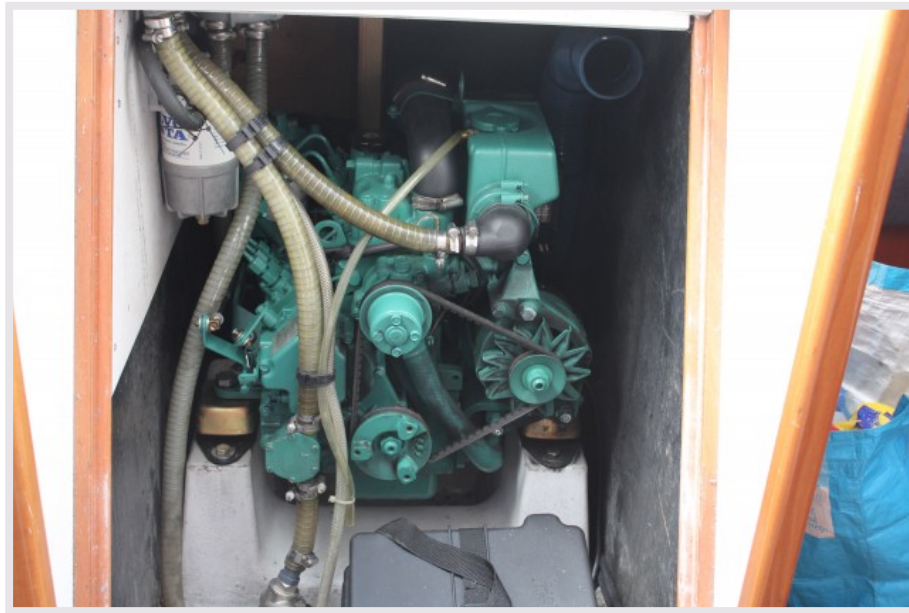


EUROPEAN YACHTING NETWORK





EUROPEAN YACHTING NETWORK





EUROPEAN YACHTING NETWORK





EUROPEAN YACHTING NETWORK