



EUROPEAN YACHTING NETWORK

## Vlet Directie (1977)

Property: 16.404.1879



EYN Price: **€ 65.000**

Length: 12,00 m; Width: 3,85 m; Draft: 1,25 m; Headroom: 1,90 m; Engine brand: Ford ; Total engine power: 125 hp; Engine hours: 2.600 hour; Number of engines: 1 ; -: Ship carpenter ;

well maintained ship



EUROPEAN YACHTING NETWORK

### The yacht

<b>Brand</b>	Vlet
<b>Type</b>	Directie
<b>Boat type</b>	Motor boat
<b>Name of the boat</b>	Mira
<b>BTW/VAT</b>	Paid
<b>Year of construction</b>	1977
<b>Berth</b>	Gelderland - Nederland

### Sizes & Weights

<b>Length</b>	12,00 m
<b>Width</b>	3,85 m
<b>Draft</b>	1,25 m
<b>Clearance</b>	2,60 m
<b>Headroom</b>	1,90 m
<b>Drinking water</b>	1.000 l
<b>Maximum speed</b>	20 kn

### The engine

<b>Engine brand</b>	Ford
<b>Total engine power</b>	125 hp
<b>Engine hours</b>	2.600 hour
<b>Last service</b>	05-03-2014
<b>Fueltank capacity</b>	1.000 l



## EUROPEAN YACHTING NETWORK

### DECK EQUIPMENT

<b>Material deck</b>	Steel, with anti-glide coating
<b>Anchor</b>	Electrical
<b>Options present</b>	Swimming platform Rail Cockpitcover Bow iguana Anchor winch Sailing lights Davits Dining table

### ELECTRONICS

<b>Voltage circuit</b>	24V
<b>Heating</b>	Central heating
<b>Options present</b>	Battery charger Alarm system Shore power

### ENGINE ROOM

<b>Starting batteries</b>	2
<b>Exhaust</b>	Dry
<b>Number of engines</b>	1
<b>Fuel</b>	Diesel
<b>Light batteries</b>	2
<b>Options present</b>	220V socket Converter Water pressure system pump Ventilation

### ENTERTAINMENT

<b>Options present</b>	Sound system TV
------------------------	--------------------

### GALLEY



## EUROPEAN YACHTING NETWORK

<b>Cooking ring</b>	3-burners
<b>Options present</b>	Geyser
	Sink
	Freezer
	Fridge

### INTERIOR LAYOUT

<b>Berths</b>	4
<b>Bedrooms</b>	1
<b>Window frames</b>	Aluminium
<b>Options present</b>	Aft cabin
	Dinette

### MATERIALS INTERIOR

<b>Ceiling</b>	Wood
-	Ship carpenter
<b>Floor covering</b>	eiken
<b>Woodwork</b>	Oak
<b>Seats</b>	Fabric

### NAVIGATION

<b>Bow thruster</b>	Hydraulic
<b>Communication</b>	dsc marifoon
<b>Options present</b>	Radar
	Mariphone
	Compass
	Depth gauge
	GPS
	Remote operation
	Claxon

### SAFETY

<b>Options present</b>	Life jackets
------------------------	--------------

### TECHNICAL DETAILS



EUROPEAN YACHTING NETWORK

<b>Type of engine</b>	Inboard
<b>Technical condition below the waterline</b>	Good condition
<b>Propulsion</b>	Fixed propeller shaft
<b>Propeller(s)</b>	3 Blades
<b>Material (hull)</b>	Steel
<b>Anti fouling</b>	Done
<b>Throttles</b>	Cabling
<b>Type of boat</b>	Motor Yacht
<b>Steering equipment</b>	Hydraulic
<b>Material structure</b>	Steel
<b>Technical condition hull</b>	Good condition
<b>Technical condition deck</b>	Good condition
<b>Condition structure</b>	Good condition

#### WET ROOM

<b>Toilet</b>	1
---------------	---



EUROPEAN YACHTING NETWORK







EUROPEAN YACHTING NETWORK





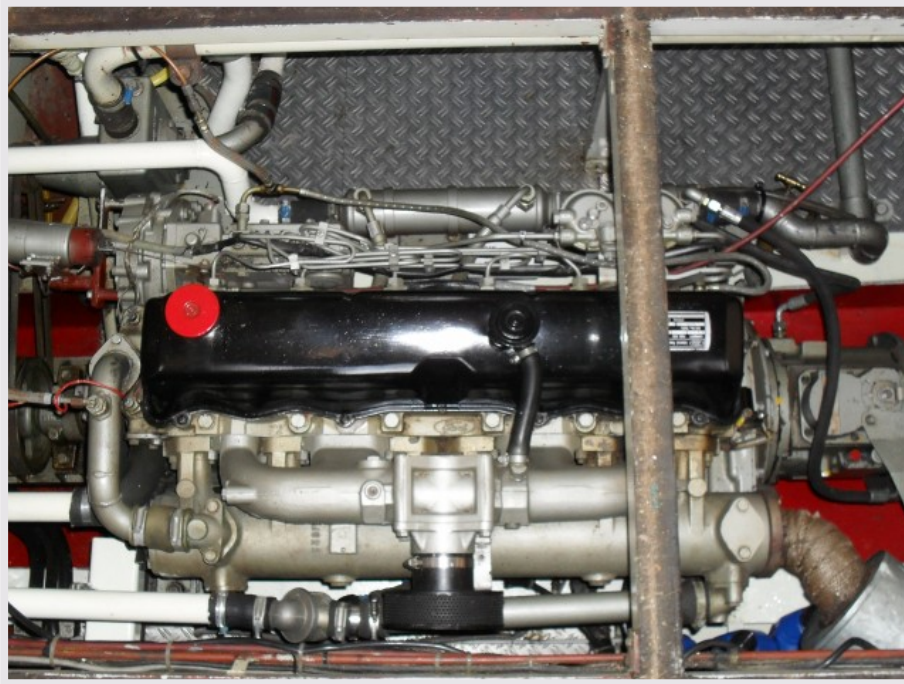
EUROPEAN YACHTING NETWORK







EUROPEAN YACHTING NETWORK





EUROPEAN YACHTING NETWORK

